

The Magical Data Form Web Part

Raymond Mitchell

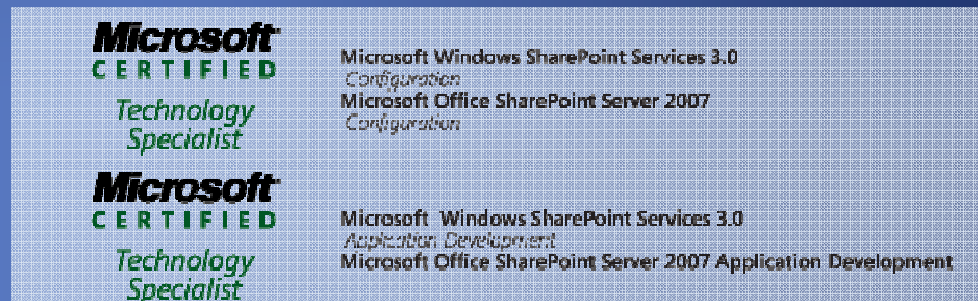
<http://www.iwkid.com>

Agenda

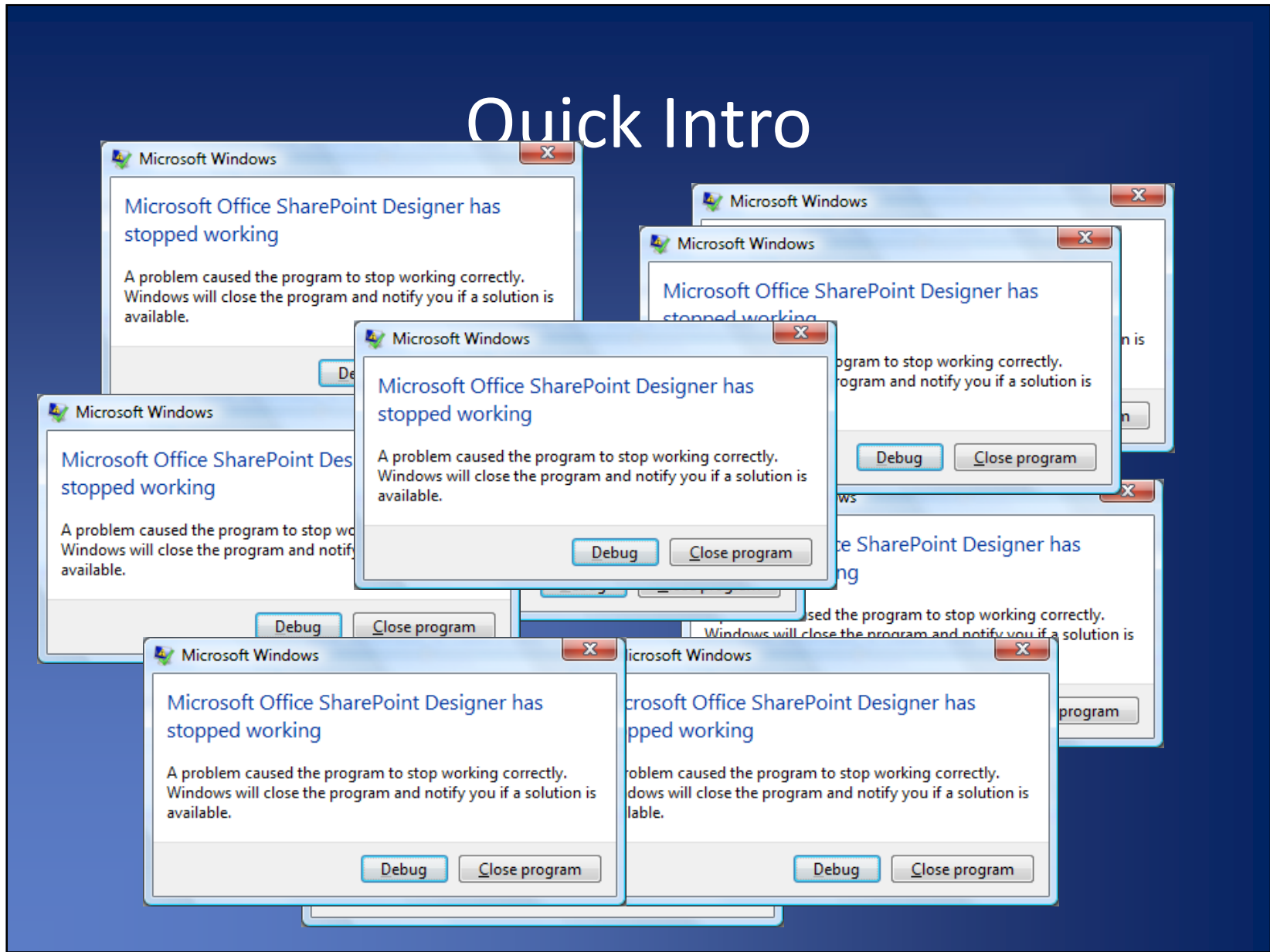
- Quick Intro
- What is the Data Form Web Part?
- SharePoint Designer and the Basics
- Advanced DFWP Transformations
- Advanced DFWPs
- Extending the DFWP with .NET
- Resources

Quick Intro

- Raymond Mitchell (iwkid)
- SharePoint Consultant at Inetium



Quick Intro



What is the Data Form Web Part?

- Web Part
- “Swiss Army Knife” of Web Parts
- AKA: Data View Web Part (v2)
- Displays Data using XSLT
- `Microsoft.SharePoint.WebPartPages.DataFormWebPart`

SharePoint Designer and the Basics

- What is SPD?
- Adding a LVWP
- Adding Simple DVWP
- Convert a LVWP into a DVWP
- Create a DFWP of an XML file
 - Edit Form

Advanced DFWP Transformations

- Create JavaScript
- MashUps

Advanced DFVPs

- Hidden Lists
- Master / Detail
- Form Actions
- Display Data from SQL
- Linked Data Sources

Advanced DFWPs

- Cross-Site Data Forms
- Cross-Site Rollups

Extending the DFWP with .NET

- Create a class that extends DataFormWebPart
- Set a custom Data Source

Resources

- SPDataSource and Rollups

<http://blogs.msdn.com/sharepointdesigner/archive/2007/04/24/spdatasource-and-rollups-with-the-data-view.aspx>

- Data View Parameters

<http://dataformwebpart.com/2007/11/07/spd-2007-data-view-parameters-you-dont-know-about/>

- Hidden SharePoint Lists

<http://dataformwebpart.com/2007/11/08/displaying-hidden-sharepoint-lists-using-a-data-view-part-1/>

Resources

- Write your own DFWP with C#

<http://sharepointhappenings.com/archive/2007/06/28/writing-your-own-custom-dataformwebpart-with-c-rather-than-sharepoint-designer.aspx>

- Plotting data using Virtual Earth

<http://blogs.msdn.com/sharepointdesigner/archive/2007/05/23/plotting-your-data-using-virtual-earth.aspx>